
Plotting using Genominator and GenomeGraphs (Beta)

James Bullard Kasper Daniel Hansen

Modified: April 18, 2010, Compiled: March 5, 2011

This vignette is preliminary, and should be viewed as subject to change. A number of the functions are not directly exported by the package – there is a reason for that.

In this vignette we demonstrate how to visualize data using the *GenomeGraphs* package. The main idea is that we want to build a plotting function which we can use to plot regions. The simplest case is the following:

First, we make a database:

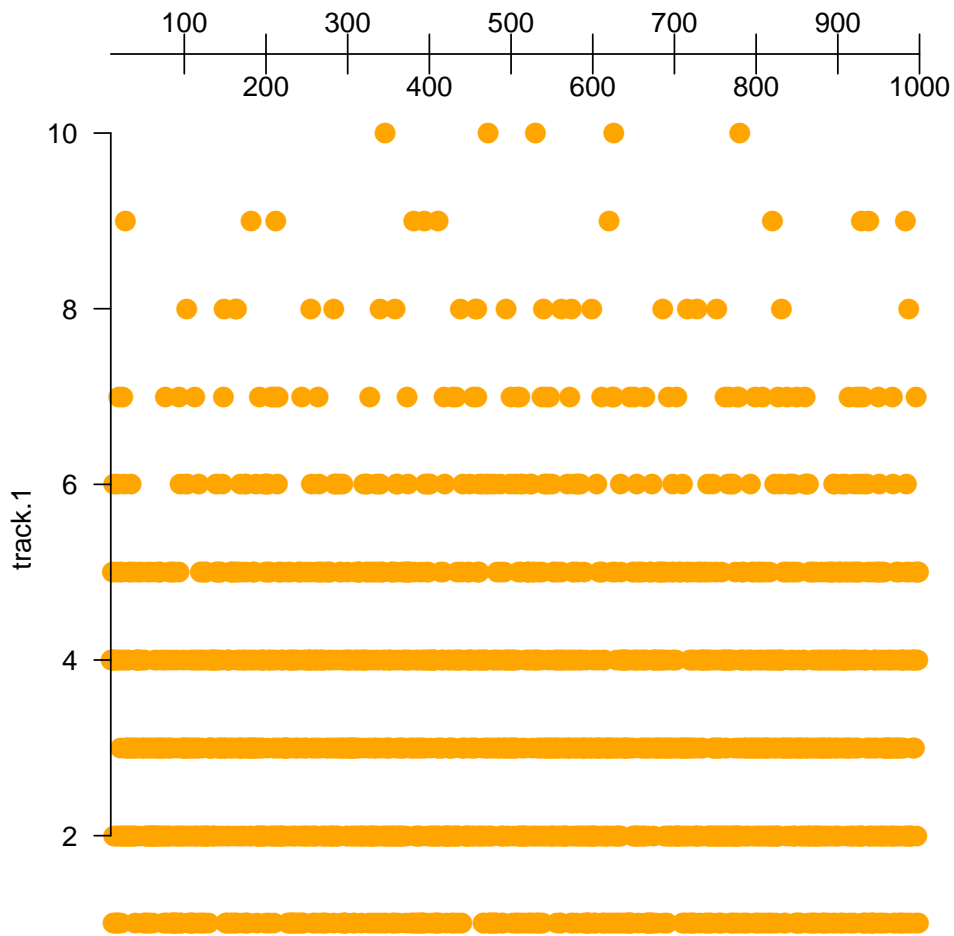
```
> require(Genominator)
> options(verbose = FALSE)
> N <- 1e+05
> K <- 100
> df <- data.frame(chr = sample(1:16, size = N, replace = TRUE),
+   location = sample(1:1000, size = N, replace = TRUE), strand = sample(c(1L,
+   -1L), size = N, replace = TRUE))
> eData <- aggregateExpData(importToExpData(df, dbFilename = "pmy.db",
+   overwrite = TRUE, tablename = "ex_tbl"))
> annoData <- data.frame(chr = sample(1:16, size = K, replace = TRUE),
+   strand = sample(c(1, -1), size = K, replace = TRUE), start = (st <- sample(1:1000,
+   size = K, replace = TRUE)), end = st + rpois(K, 75),
+   feature = c("gene", "intergenic")[sample(1:2, size = K, replace = TRUE)])
> rownames(annoData) <- paste("elt", 1:K, sep = ".")

> rp <- Genominator:::makeRegionPlotter(list(track.1 = list(expData = eData,
+   what = "counts")))
> args(rp)

function (chr, start, end, overlays = NULL, title = NULL, ...)
NULL
```

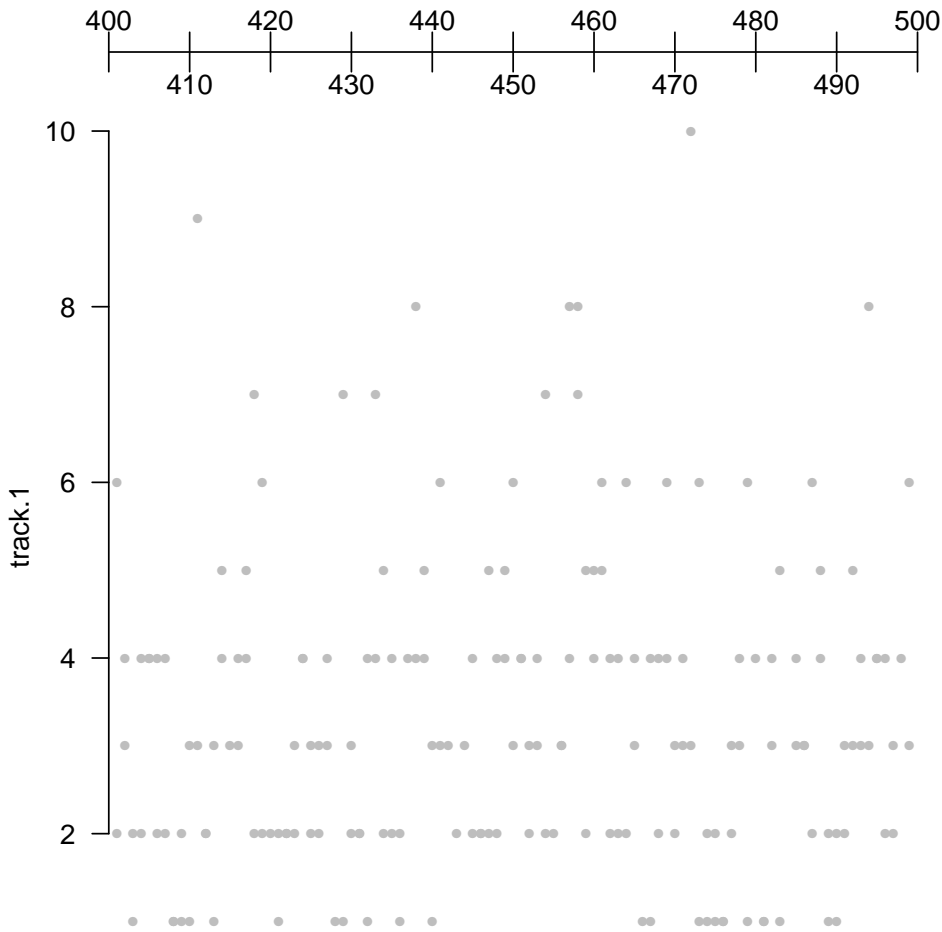
This constructs a function which can be called to view particular pieces of data.

```
> rp(1, 10, 1000)
```



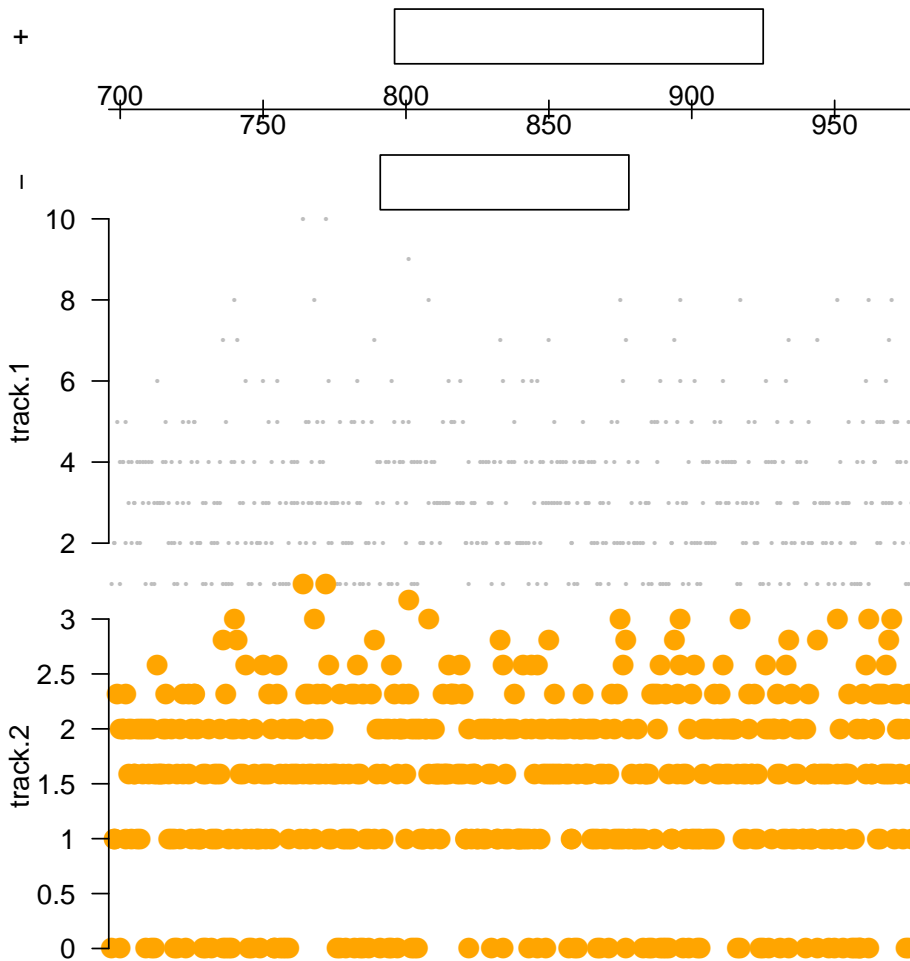
GenomeGraphs provides a wealth of customization options and means of plotting which for the most part are transferable using the list.

```
> rp <- Genominator:::makeRegionPlotter(list(track.1 = list(expData = eData,
+   what = "counts", dp = DisplayPars(lwd = 0.45, color = "grey"))))
> rp(1, 400, 500)
```



Here we can plot our annotation using the annotation factory construct. This is probably a little advanced. An easier thing is to use Ensembl to do the plotting of the annotation. Often, however, you will want to augment the annotation produced by Ensembl.

```
> annoFactory <- Genominator:::makeAnnoFactory(annoData, featureColumnName = "feature",
+   groupColumnName = NULL, idColumnName = NULL, dp = DisplayPars(gene = "blue",
+   intergenic = "green"))
> rp <- Genominator:::makeRegionPlotter(list(track.1 = list(expData = eData,
+   what = "counts", dp = DisplayPars(lwd = 0.2, color = "grey")),
+   track.2 = list(expData = eData, what = "counts", fx = log2,
+   DisplayPars(lwd = 0.3, color = "black"))), annoFactory = annoFactory)
> rp(annoData[1, "chr"], annoData[1, "start"] - 100, annoData[1,
+   "end"] + 100)
```



GenomeGraphs also offers a nice way to plot annotation for a given region using data from Ensembl or other sources of annotation - in some cases you have to do a little work because of the way that Biomart indexes the annotation and the way the *Genominator* package works (in this case yeast annotation is stored with Roman numerals denoting the chromosomes).

```
> require("biomaRt")
> mart <- useMart("ensembl", dataset = "scerevisiae_gene_ensembl")
> annoFactory <- Genominator::makeAnnoFactory(mart, chrFunction = function(chr) as.roman(chr))
> load(system.file("data", "chr1_yeast.rda", package = "Genominator"))
> head(chr1_yeast)

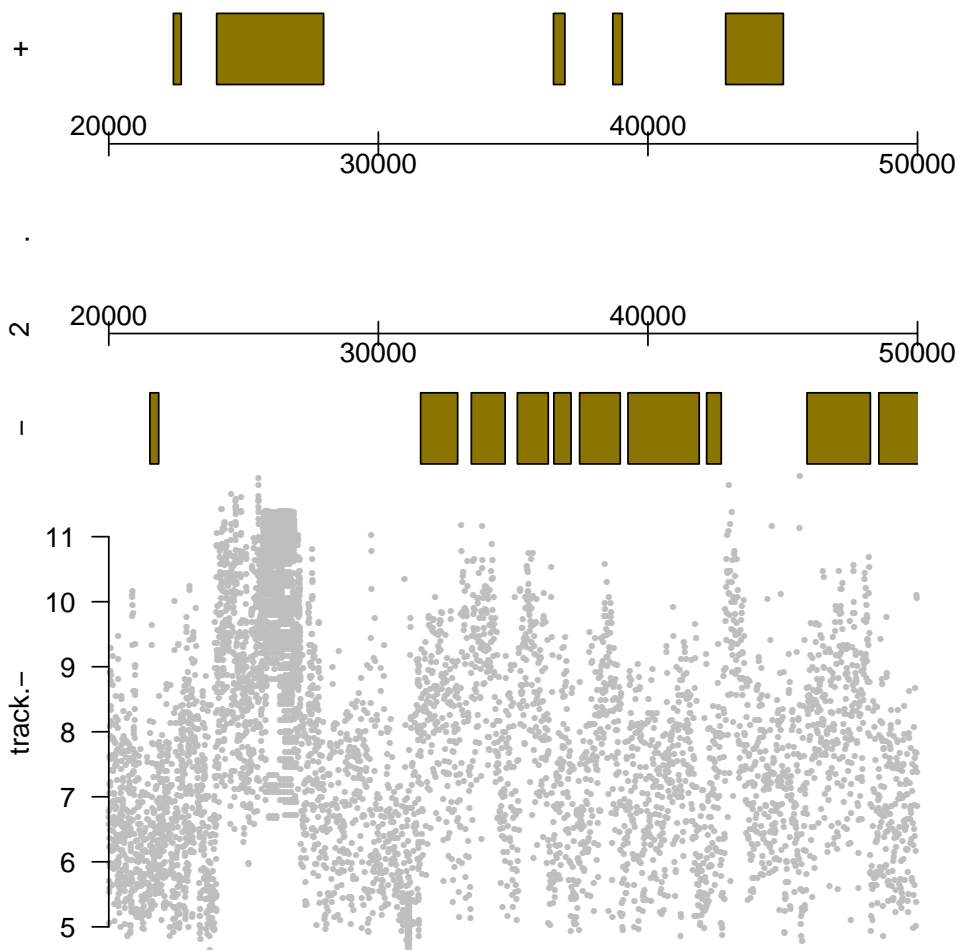
  chr location strand  mRNA_1  mRNA_2
1   1         1     -1 9.038919 8.614710
2   1         1     -1 9.172428 8.558421
3   1         2     -1 9.422065 9.131857
4   1         2     -1 8.679480 8.442943
5   1         2     -1 8.546894 8.794416
6   1         2     -1 8.784635 8.918863

> yData <- importToExpData(chr1_yeast, dbFilename = "my.db", tablename = "yeast",
+   overwrite = TRUE)
> rp <- Genominator::makeRegionPlotter(list(`track.-` = list(expData = yData,
+   what = c("mRNA_1", "mRNA_2"), fx = rowMeans, strand = -1,
```

```

+   dp = DisplayPars(lwd = 0.3, color = "grey")), annoFactory = annoFactory)
> rp(1, 20000, 50000)

```



SessionInfo

- R version 2.12.2 (2011-02-25), x86_64-unknown-linux-gnu
- Locale: LC_CTYPE=en_US.UTF-8, LC_NUMERIC=C, LC_TIME=en_US.UTF-8, LC_COLLATE=C, LC_MONETARY=C, LC_MESSAGES=en_US.UTF-8, LC_PAPER=en_US.UTF-8, LC_NAME=C, LC_ADDRESS=C, LC_TELEPHONE=C, LC_MEASUREMENT=en_US.UTF-8, LC_IDENTIFICATION=C
- Base packages: base, datasets, grDevices, graphics, grid, methods, stats, utils
- Other packages: DBI 0.2-5, GenomeGraphs 1.10.0, Genominator 1.4.2, IRanges 1.8.9, RSQLite 0.9-4, biomaRt 2.6.0
- Loaded via a namespace (and not attached): RCurl 1.5-0, XML 3.2-0, tools 2.12.2