

Using *crlmm* to genotype data from Illumina's Infinium BeadChips

Matt Ritchie

October 25, 2009

1 Getting started

In this user guide we read in and genotype data from 40 HapMap samples which have been analyzed using Illumina's 370k Duo BeadChips. This data is available in the *hapmap370k* package. Additional chip-specific model parameters and basic SNP annotation information used by CRLMM is stored in the *human370v1c* package. These can be downloaded from <http://rafalab.jhsph.edu/software.html> and must be installed for the following code to work.

2 Reading in data

The function `readIdatFiles` extracts the Red and Green intensities from the binary `idat` files output by Illumina's scanning device. The file `samples370k.csv` contains information about each sample.

```
> options(width = 50)

> library(Biobase)
> library(crlmm)
> library(hapmap370k)
> data.dir = system.file("idatFiles", package = "hapmap370k")
> samples = read.csv(file.path(data.dir,
+   "samples370k.csv"), as.is = TRUE)
> samples[1:5, ]
```

	HapMap.Name	Gender	Plate	Well
1	NA06991	Female	WG1000442-DNA	E11
2	NA07000	Female	WG1000442-DNA	D08
3	NA10859	Female	WG1000453-DNA	B02

```

4     NA11882 Female WG1000453-DNA  D08
5     NA06993  Male WG1000447-DNA  D11
  SentrrixPosition
1     4030186347_A
2     4030186263_B
3     4019585415_B
4     4031058127_B
5     4031058211_B

```

```

> RG = readIdatFiles(samples, path = data.dir,
+   arrayInfoColNames = list(barcode = NULL,
+     position = "SentrrixPosition"),
+   saveDate = TRUE)

```

Reading in this data takes approximately 90 seconds and peak memory usage was 1.2 GB of RAM on our linux system. The RG object is an *NChannelSet* which stores the Red and Green intensities, the number of beads and standard errors for each bead-type. The scanning date of each array is stored in `protocolData`.

```

> class(RG)

```

```

[1] "NChannelSet"
attr(,"package")
[1] "Biobase"

```

```

> dim(RG)

```

```

Features  Samples
  381079      40

```

```

> slotNames(RG)

```

```

[1] "assayData"      "phenoData"
[3] "featureData"    "experimentData"
[5] "annotation"     "protocolData"
[7] ".__classVersion__"

```

```

> channelNames(RG)

```

```

[1] "G"  "Gnb" "Gse" "R"  "Rnb" "Rse"

```

```

> exprs(channel(RG, "R"))[1:5, 1:5]

```

	4030186347_A	4030186263_B	4019585415_B
10008	321	170	2961
10010	1738	3702	3105
10025	80	101	145
10026	5043	1856	6519
10039	4905	2464	9080

	4031058127_B	4031058211_B
10008	3468	262
10010	3425	70
10025	29	21
10026	8304	9872
10039	9788	10867

```
> exprs(channel(RG, "G"))[1:5, 1:5]
```

	4030186347_A	4030186263_B	4019585415_B
10008	4183	4484	3765
10010	2593	51	3824
10025	2768	2322	3435
10026	216	2840	211
10039	297	3016	345

	4031058127_B	4031058211_B
10008	3558	6502
10010	3528	6154
10025	3471	3608
10026	164	188
10039	361	380

```
> pd = pData(RG)
```

```
> pd[1:5, ]
```

	HapMap.Name	Gender	Plate
4030186347_A	NA06991	Female	WG1000442-DNA
4030186263_B	NA07000	Female	WG1000442-DNA
4019585415_B	NA10859	Female	WG1000453-DNA
4031058127_B	NA11882	Female	WG1000453-DNA
4031058211_B	NA06993	Male	WG1000447-DNA

	Well	SentrixPosition
4030186347_A	E11	4030186347_A
4030186263_B	D08	4030186263_B
4019585415_B	B02	4019585415_B
4031058127_B	D08	4031058127_B
4031058211_B	D11	4031058211_B

```

> scandatetime = strptime(protocolData(RG)[["ScanDate"]],
+   "%m/%d/%Y %H:%M:%S %p")
> datescanned = substr(scandatetime, 1,
+   10)
> scanbatch = factor(datescanned)
> levels(scanbatch) = 1:16
> scanbatch = as.numeric(scanbatch)

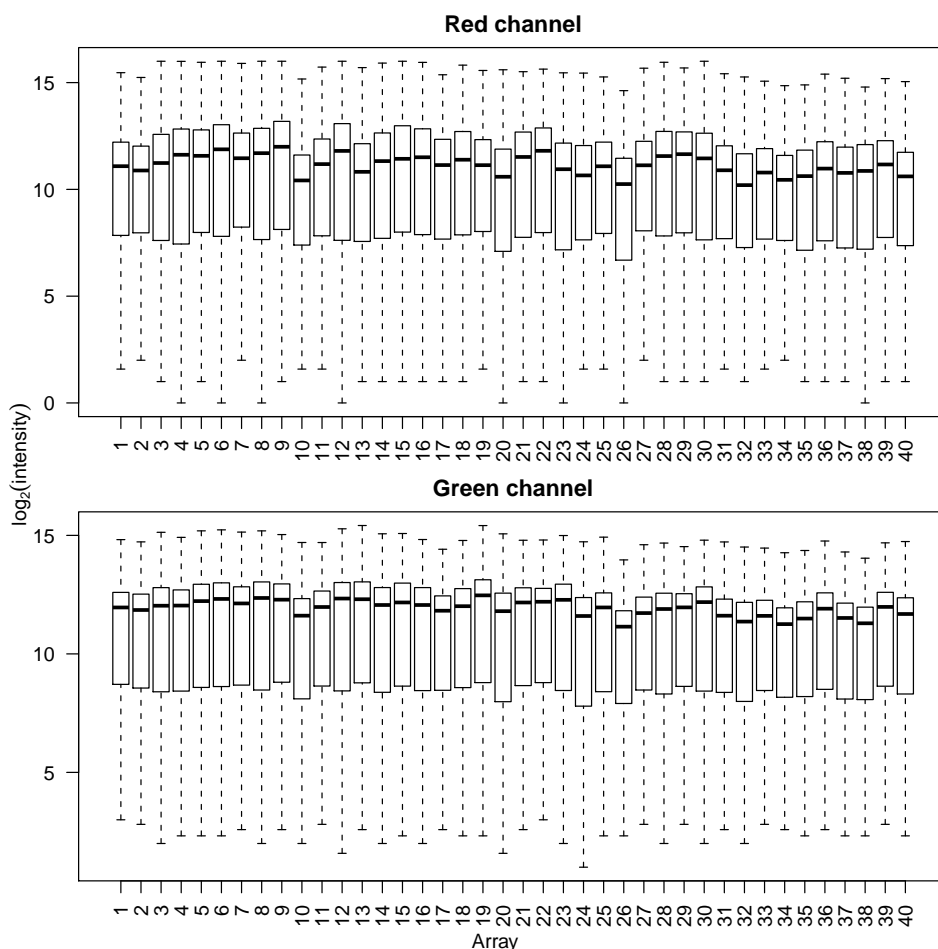
```

Plots of the summarised data can be easily generated to check for arrays with poor signal.

```

> par(mfrow = c(2, 1), mai = c(0.4, 0.4,
+   0.4, 0.1), oma = c(1, 1, 0, 0))
> boxplot(log2(exprs(channel(RG, "R"))),
+   xlab = "Array", ylab = "", names = 1:40,
+   main = "Red channel", outline = FALSE,
+   las = 2)
> boxplot(log2(exprs(channel(RG, "G"))),
+   xlab = "Array", ylab = "", names = 1:40,
+   main = "Green channel", outline = FALSE,
+   las = 2)
> mtext(expression(log[2](intensity)), side = 2,
+   outer = TRUE)
> mtext("Array", side = 1, outer = TRUE)

```



3 Genotyping

Next we use the function `crlmmIllumina` which performs preprocessing followed by genotyping using the CRLMM algorithm.

```
> crlmmResult = crlmmIllumina(RG = RG, cdfName = "human370v1c",
+   sns = pData(RG)$ID, returnParams = TRUE)
```

This analysis took 470 seconds to complete and peak memory usage was 3.3 GB on our system. The output stored in `crlmmResult` is a *SnpSet* object.

```
> class(crlmmResult)
```

```
[1] "SnpSet"
attr(,"package")
[1] "Biobase"
```

```
> dim(crlmmResult)
```

```
Features Samples
346451      40
```

```
> slotNames(crlmmResult)
```

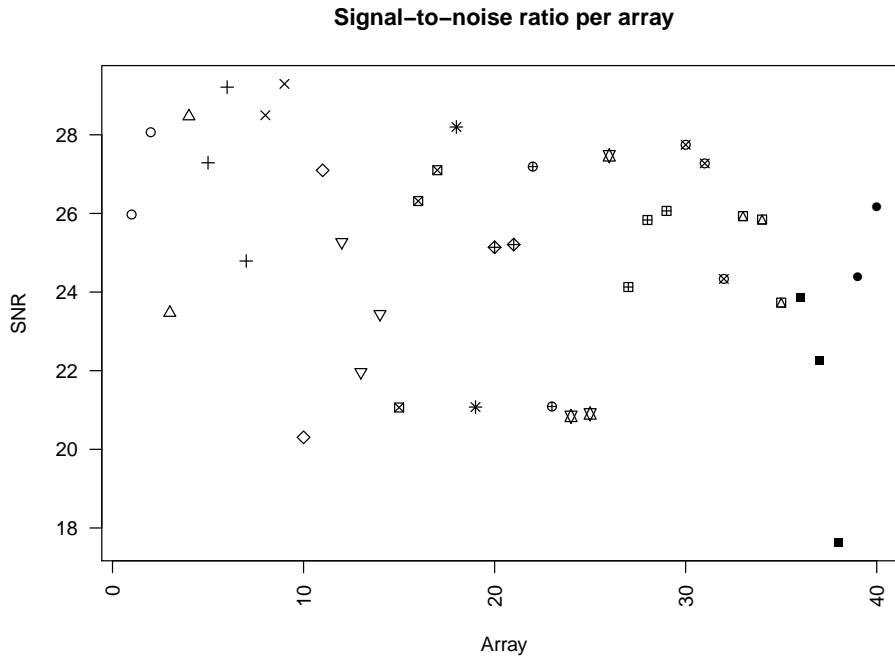
```
[1] "assayData"      "phenoData"
[3] "featureData"   "experimentData"
[5] "annotation"    "protocolData"
[7] ".__classVersion__"
```

```
> calls(crlmmResult)[1:10, 1:5]
```

```
      1 2 3 4 5
rs12354060 3 3 3 3 3
rs6650104  1 1 1 1 1
rs12184279 3 1 3 3 3
rs12564807 1 1 1 1 1
rs3115860  2 1 1 2 2
rs3115850  2 2 2 2 2
rs7515489  3 3 3 1 1
rs12124819 1 2 2 1 1
rs17160939 1 1 1 1 1
rs12086311 3 3 3 3 3
```

Plotting the *SNR* reveals no obvious batch effects in this data set (different symbols are used for arrays scanned on different days).

```
> plot(crlmmResult[["SNR"]], pch = scanbatch,
+      xlab = "Array", ylab = "SNR", main = "Signal-to-noise ratio per array",
+      las = 2)
```



4 System information

This analysis was carried out on a linux machine with 32GB of RAM using the following packages:

```
> sessionInfo()
```

```
R version 2.10.0 RC (2009-10-23 r50188)
x86_64-unknown-linux-gnu
```

```
locale:
```

```
[1] LC_CTYPE=en_US.iso885915
[2] LC_NUMERIC=C
[3] LC_TIME=en_US.iso885915
[4] LC_COLLATE=en_US.iso885915
[5] LC_MONETARY=C
[6] LC_MESSAGES=en_US.iso885915
[7] LC_PAPER=en_US.iso885915
[8] LC_NAME=C
[9] LC_ADDRESS=C
[10] LC_TELEPHONE=C
[11] LC_MEASUREMENT=en_US.iso885915
```

[12] LC_IDENTIFICATION=C

attached base packages:

[1] tools stats graphics grDevices
[5] utils datasets methods base

other attached packages:

[1] human370v1cCrlmm_1.0.0 hapmap370k_1.0.0
[3] crlmm_1.3.23 Biobase_2.5.8
[5] weaver_1.11.1 codetools_0.2-2
[7] digest_0.4.1

loaded via a namespace (and not attached):

[1] affyio_1.13.5 annotate_1.23.4
[3] AnnotationDbi_1.7.20 Biostrings_2.13.54
[5] DBI_0.2-4 ellipse_0.3-5
[7] genefilter_1.25.11 IRanges_1.3.97
[9] mvtnorm_0.9-7 oligoClasses_1.7.16
[11] preprocessCore_1.7.9 RSQLite_0.7-3
[13] SNPchip_1.9.8 splines_2.10.0
[15] survival_2.35-7 xtable_1.5-5