

# A short tutorial on using pRoloc for spatial proteomics data analysis

LAURENT GATTO\* AND LISA M. BRECKELS

Cambridge Center for Proteomics  
University of Cambridge

August 14, 2013

---

This tutorial illustrates the usage of the pRoloc R package for the analysis and interpretation of spatial proteomics data. It walks the reader through the creation of MSnSet instances, that hold the quantitative proteomics data and meta-data and introduces several aspects of data analysis, including data visualisation and application of machine learning to predict protein localisation.

*Keywords:* Bioinformatics, organelle proteomics, machine learning, visualisation

---

---

\*lg390@cam.ac.uk

# Contents

<b>1</b>	<b>Introduction</b>	<b>3</b>
1.1	Spatial proteomics . . . . .	3
1.2	About R and pRoloc . . . . .	3
<b>2</b>	<b>Data structures</b>	<b>5</b>
2.1	Test data description . . . . .	5
2.2	Importing and loading data . . . . .	5
2.2.1	The original data file . . . . .	5
2.2.2	From csv files to R data . . . . .	6
2.2.3	The MSnSet class . . . . .	8
2.3	Data processing . . . . .	11
<b>3</b>	<b>Data analysis</b>	<b>13</b>
3.1	Data visualisation . . . . .	13
3.2	Unsupervised ML . . . . .	14
3.3	Supervised ML . . . . .	20
3.3.1	Classification algorithm parameters optimisation . . . . .	20
3.3.2	Classification . . . . .	22
3.4	Semi-supervised ML . . . . .	25
3.5	Following up on novelty discovery . . . . .	27
<b>4</b>	<b>Conclusions</b>	<b>30</b>

# 1 Introduction

## 1.1 Spatial proteomics

Spatial (or organelle) proteomics is the study of the localisation of proteins inside cells. The sub-cellular compartment can be organelles, i.e. structures defined by lipid bi-layers, macro-molecular assemblies of proteins and nucleic acids or large protein complexes. In this document, we will focus on mass-spectrometry based approaches that assay a population of cells, as opposed as microscopy based techniques that monitor single cells, as the former is the primary concern of **pRoloc**, although the techniques described below and the infrastructure in place could also be applied to processed image data. The typical experimental use-case for using **pRoloc** is a set of fractions, originating from a total cell lysate. These fractions can originate from a continuous gradient, like in the LOPIT ([Dunkley et al., 2006](#)) or PCP ([Foster et al., 2006](#)) approaches, or can be discrete fractions. The content of the fractions is then identified and quantified (using labelled or un-labelled quantitation techniques). Using relative quantitation of known organelle residents, termed organelle markers, organelle-specific profiles along the gradient are determined and new residents are identified based on matching of these distribution profiles. See for example [Gatto et al. \(2010\)](#) and references therein for a detailed review on organelle proteomics.

It should be noted that large protein complexes, that are not necessarily separately enclosed within their own lipid bi-layer, can be detected by such techniques, as long as a distinct profile can be defined across the fractions.

## 1.2 About R and pRoloc

R ([R Development Core Team, 2011](#)) is a statistical programming language and interactive working environment. It can be expanded by so-called packages to confer new functionality to users. Many such packages have been developed for the analysis of high-throughput biology, notably through the Bioconductor project ([Gentleman et al., 2004](#)). Two packages are of particular interest here, namely **MSnbase** ([Gatto and Lilley, 2012](#)) and **pRoloc**. The former provides flexible infrastructure to store and manipulate quantitative proteomics data and the associated meta-data and the latter implements specific algorithmic technologies to analyse organelle proteomics data.

Among the advantages of R are robust statistical procedures, good visualisation capabilities, excellent documentation, reproducible research<sup>1</sup>, power and flexibility of the R language and environment itself and a rich environment for specialised

---

<sup>1</sup>The content of this document is compiled (the code is executed and its output, text and figures, is displayed dynamically) to generate the pdf file.

functionality in many domains of bioinformatics: tools for many omics technologies, including proteomics, bio-statistics, gene ontology and biological pathway analysis, ... Although there exists some specific graphical user interfaces (GUI) – see for example the GUI implemented in the `synapter` package<sup>2</sup> for the analysis MS<sup>E</sup> data, interaction with R is executed through a command line interface. Although this mode of interaction might look alien to new users, experience has proven that after a first steep learning curve, great results can be achieved by non-programmers. Furthermore, specific and general documentation is plenty and beginners and advanced course material are also widely available.

Once R is started, the first step to enable functionality of a specific packages is to load them using the `library` function, as shown in the code chunk below:

```
> library("MSnbase")
> library("pRoloc")
> library("pRolocdata")
```

`MSnbase` implements the data containers that are used by `pRoloc`. `pRolocdata` is a data package that supplies several published organelle proteomics data sets.

As a final setup step, we set the default colour palette for some of our custom plotting functionality to use semi-transparent colours in the code chunk below (see `?setStockcol` for details). This facilitates visualisation of overlapping points.

```
> setStockcol(paste0(getStockcol(), 70))
```

---

<sup>2</sup><http://bioconductor.org/packages/devel/bioc/html/synapter.html>

## 2 Data structures

### 2.1 Test data description

The data used in this tutorial has been published in [Tan et al. \(2009\)](#). The LOPIT technique ([Dunkley et al., 2006](#)) is used to localise integral and associated membrane proteins in *Drosophila melanogaster* embryos. Briefly, embryos were collected at 0 – 16 hours, homogenised and centrifuged to collect the supernatant, removing cell debris and nuclei. Membrane fractionation was performed on a iodixanol gradient and fractions were quantified using iTRAQ isobaric tags ([Ross et al., 2004](#)) as follows: fractions 4/5, 114; fractions 12/13, 115; fraction 19, 116 and fraction 21, 117. Labelled peptides were then separated using cation exchange chromatography and analysed by LS-MS/MS on a QSTAR XL quadrupole-time-of-flight mass spectrometer (Applied Biosystems). The original localisation analysis was performed using partial least square discriminant analysis (PLS-DA). Relative quantitation data was retrieved from the supplementary file `pr800866n_si_004.xls`<sup>3</sup> and imported into R as described below. We will concentrate on the first replicate.

### 2.2 Importing and loading data

This section illustrates how to import data in comma-separated value (csv) format into an appropriate R data structure. The first section shows the original csv (comma separated values) spreadsheet, as published by the authors, and how one can read such a file into R using the `read.csv` function. This spreadsheet file is similar to the output of many quantitation software.

In the next section, we show 2 csv files containing a subset of the columns of original `pr800866n_si_004-rep1.csv` file and another short file, created manually, that will be used to create the appropriate R data.

#### 2.2.1 The original data file

```
> ## The original data for replicate 1, available from the
> ## pRolocdata package
> f0 <- dir(system.file("extdata", package = "pRolocdata"),
+          full.names = TRUE, pattern = "pr800866n_si_004-rep1.csv")
> csv <- read.csv(f0)
```

The three first lines of the original spreadsheet, containing the data for replicate one, are illustrated below (using the function `head`). It contains 888 rows (proteins)

---

<sup>3</sup>[http://pubs.acs.org/doi/suppl/10.1021/pr800866n/suppl\\_file/pr800866n\\_si\\_004.xls](http://pubs.acs.org/doi/suppl/10.1021/pr800866n/suppl_file/pr800866n_si_004.xls)



```

> ## The quantitation data, from the original data
> f1 <- dir(system.file("extdata", package = "pRoloc"),
+           full.names = TRUE, pattern = "exprsFile.csv")
> exprsCsv <- read.csv(f1)
> ## Feature meta-data, from the original data
> f2 <- dir(system.file("extdata", package = "pRoloc"),
+           full.names = TRUE, pattern = "fdataFile.csv")
> fdataCsv <- read.csv(f2)
> ## Sample meta-data, a new file
> f3 <- dir(system.file("extdata", package = "pRoloc"),
+           full.names = TRUE, pattern = "pdataFile.csv")
> pdataCsv <- read.csv(f3)

```

exprsFile.csv containing the quantitation (expression) data for the 888 proteins and 4 reporter tags.

```

> head(exprsCsv, n = 3)

```

	ProteinID	X114	X115	X116	X117
1	CG10060	0.3790	0.2810	0.2250	0.1140
2	CG10067	0.4200	0.2097	0.2061	0.1639
3	CG10077	0.1873	0.1673	0.1697	0.4760

fdataFile.csv containing meta-data for the 888 features (here proteins).

```

> head(fdataCsv, n = 3)

```

	ProteinID	FBgn	FlybaseSymbol	NoPeptideIDs
1	CG10060	FBgn0001104	G-ialpha65A	3
2	CG10067	FBgn0000044	Act57B	5
3	CG10077	FBgn0035720	CG10077	5

	MascotScore	NoPeptidesQuantified	PLSDA
1	179.9	1	PM
2	222.4	9	PM
3	219.7	3	

pdataFile.csv containing samples (here fractions) meta-data. This simple file has been created manually.

```
> pdataCsv

  sampleNames Fractions
1      X114      4/5
2      X115     12/13
3      X116      19
4      X117      21
```

A self-contained data structure, called `MSnSet` (defined in the `MSnbase` package) can now easily be generated using the `readMSnSet` constructor, providing the respective `csv` file names shown above and specifying that the data is comma-separated (with `sep = ","`). Below, we call that object `tan2009r1` and display its content.

```
> tan2009r1 <- readMSnSet(exprsFile = f1, featureDataFile = f2,
+   phenoDataFile = f3, sep = ",")
> tan2009r1
```

```
MSnSet (storageMode: lockedEnvironment)
assayData: 888 features, 4 samples
  element names: exprs
protocolData: none
phenoData
  sampleNames: X114 X115 X116 X117
  varLabels: Fractions
  varMetadata: labelDescription
featureData
  featureNames: CG10060 CG10067 ... CG9983 (888
  total)
  fvarLabels: FBgn FlybaseSymbol ... PLSDA (6
  total)
  fvarMetadata: labelDescription
experimentData: use 'experimentData(object)'
```

Annotation:

```
- - - Processing information - - -
MSnbase version: 1.8.0
```

### 2.2.3 The `MSnSet` class

Although there are additional specific sub-containers for additional meta-data (for instance to make the object MIAPE compliant), the feature (the sub-container, or



slot `featureData`) and sample (the `phenoData` slot) are the most important ones. They need to meet the following validity requirements (see figure 1):

- the number of row in the expression/quantitation data and feature data must be equal and the row names must match exactly, and
- the number of columns in the expression/quantitation data and number of row in the sample meta-data must be equal and the column/row names must match exactly.

It is common, in the context of `pRoloc` to update the feature meta-data (described in section 3) by adding new columns, without breaking the objects validity. Similarly, the sample meta-data can also be updated by adding new sample variables. A detailed description of the `MSnSet` class is available by typing `?MSnSet` in the R console.



**Figure 1:** Dimension requirements for the respective expression, feature and sample meta-data slots.

The individual parts of this data object can be accessed with their respective accessor methods:

- the quantitation data can be retrieved with `exprs(tan2009r1)`,
- the feature meta-data with `fData(tan2009r1)` and
- the sample meta-data with `pData(tan2009r1)`.

The advantage of this structure is that it can be manipulated as a whole and the respective parts of the data object will remain compatible. The code chunk below, for example, shows how to extract the first 5 proteins and 2 first samples:

```

> smallTan <- tan2009r1[1:5, 1:2]
> dim(smallTan)

[1] 5 2

> exprs(smallTan)

           X114  X115
CG10060 0.3790 0.2810
CG10067 0.4200 0.2097
CG10077 0.1873 0.1673
CG10079 0.2475 0.2530
CG10106 0.2160 0.1830

```

Several data sets, including the 3 replicates from [Tan et al. \(2009\)](#), are distributed as `MsnSet` instances in the `pRolocdata` package. Others include, among others, the *Arabidopsis thaliana* LOPIT data from [Dunkley et al. \(2006\)](#) (`dunkley2006`) and the mouse PCP data from [Foster et al. \(2006\)](#) (`foster2006`). Each data set can be loaded with the `data` function, as show below for the first replicate from [Tan et al. \(2009\)](#).

```

> data(tan2009r1)

```

The original marker proteins are available as a feature meta-data variables called `markers` and the output of the partial least square discriminant analysis, applied in the original publication, in the `PLSDA` feature variable. This is illustrated below using the convenience function `getMarkers`, but could also be done manually with `table(fData(tan2009r1)$markers)` and `table(fData(tan2009r1)$PLSDA)` respectively.

```

> getMarkers(tan2009r1)

organelleMarkers
      ER      Golgi      PM
      20       6      15
mitochondrion  unknown
      14      833

> getMarkers(tan2009r1, fcol = "PLSDA")

organelleMarkers

```

ER/Golgi	PM mitochondrion	
235	180	74
unknown		
399		

## 2.3 Data processing

The quantitation data obtained in the supplementary file is normalised to the sum of intensities of each protein; the sum of fraction quantitation for each protein equals 1 (considering rounding errors). This can quickly be verified by computing the row sums of the expression data.

```
> summary(rowSums(exprs(tan2009r1)))
```

Min.	1st Qu.	Median	Mean	3rd Qu.	Max.
0.999	1.000	1.000	1.000	1.000	1.000

The `normalise` method (also available as `normalize`) from the `MSnbase` package can be used to obtain relative quantitation data, as illustrated below on another iTRAQ test data set, available from `MSnbase`. Several normalisation methods are available and described in `?normalise`. For many algorithms, including classifiers in general and support vector machines in particular, it is important to properly per-process the data. Centering and scaling of the data is also available with the `scale` method, described in the `scale` manual.

In the code chunk below, we first create a test `MSnSet` instance<sup>4</sup> and illustrate the effect of `normalise(..., method = "sum")`.

```
> ## create a small illustrative test data
> data(itraqdata)
> itraqdata <- quantify(itraqdata, method = "trap", reporters = iTRAQ4,
+   verbose = FALSE, parallel = FALSE)
> ## the quantification data
> head(exprs(itraqdata), n = 3)
```

	iTRAQ4.114	iTRAQ4.115	iTRAQ4.116	iTRAQ4.117
X1	1348	2247.3	3927.7	7661.1
X10	740	799.4	712.6	940.7
X11	27638	33394.0	32104.3	26628.7

<sup>4</sup>Briefly, the `itraqdata` raw iTRAQ4-plex data is quantified by trapezoidation using `MSnbase` functionality. See the `MSnbase-demo` vignette for details.

```

> summary(rowSums(exprs(itraqdata)))

  Min. 1st Qu.  Median    Mean 3rd Qu.    Max.
   59   5640   15300   38000   42300   306000
NA's
  1

> ## normalising to the sum of feature intensities
> itraqnorm <- normalise(itraqdata, method = "sum")
> processingData(itraqnorm)

- - - Processing information - - -
Data loaded: Wed May 11 18:54:39 2011
iTRAQ4 quantification by trapezoidation: Wed Aug 14 23:26:24 2013
Normalised (sum): Wed Aug 14 23:26:26 2013
MSnbase version: 1.1.22

> head(exprs(itraqnorm), n = 3)

      iTRAQ4.114 iTRAQ4.115 iTRAQ4.116 iTRAQ4.117
X1      0.08875      0.1480      0.2587      0.5046
X10     0.23178     0.2504     0.2232     0.2946
X11     0.23077     0.2788     0.2681     0.2223

> summary(rowSums(exprs(itraqnorm)))

  Min. 1st Qu.  Median    Mean 3rd Qu.    Max.
   1      1      1      1      1      1
NA's
  1

```

Note above how the processing undergone by the `MSnSet` instances `itraqdata` and `itraqnorm` is stored in another such specific sub-container, the `processingData` slot.

The different features (proteins in the `tan2009r1` data above, but these could also represent peptides or  $MS^2$  spectra) are characterised by unique names. These can be retrieved with the `featureNames` function.

```

> head(featureNames(tan2009r1))

[1] "CG10060" "CG10067" "CG10077" "CG10079" "CG10106"
[6] "CG10130"

```

If we look back at section 2.2.2, we see that these have been automatically assigned using the first columns in the `exprsFile.csv` and `fdataFile.csv` files. It is thus crucial for these respective first columns to be identical. Similarly, the sample names can be retrieved with `sampleNames(tan2009r1)`.

### 3 Data analysis

This section will focus on two closely related aspects, data visualisation and organelle assignments. Data visualisation is used in the context on quality control, to convince ourselves that the data displays the expected properties so that the output of further processing can be trusted. Visualising results of the localisation prediction is also essential, to control the validity of these results, before proceeding with orthogonal (and often expensive) *dry* or *wet* validation.

Classification of proteins, i.e. assigning sub-cellular localisation to proteins, is the main aspect of the present data analysis. The principle is the following and is, in its basic form, a 2 step process. First, an algorithm learns from the known markers that are shown to him and models the data space accordingly. This phase is also called the training phase. In the second phase, un-labelled proteins, i.e. those that have not been labelled as resident of any organelle, are matched to the model and assigned to a group (an organelle). This 2 step process is called machine learning (ML), because the computer (machine) learns by itself how to recognise instances that possess certain characteristics and classifies them without human intervention. That does however not mean that results can be trusted blindly.

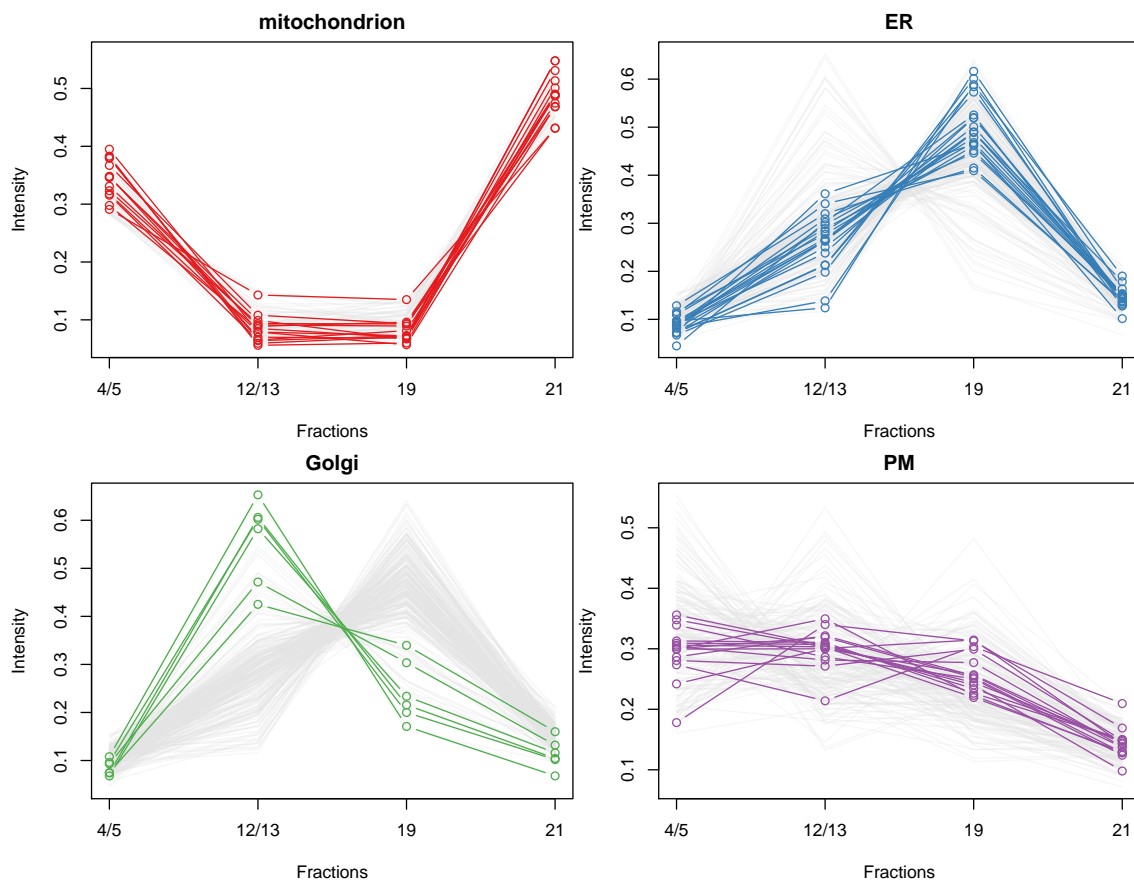
In the above paragraph, we have defined what is called supervised ML, because the algorithm is presented with some know instances from which it learns (see section 3.3.2). Alternatively, un-supervised ML does not make any assumptions about the group memberships, and uses the structure of the data itself to defined sub-groups (see section 3.1). It is of course possible to classify data based on labelled and unlabelled data. This extension of the supervised classification problem described above is called semi-supervised learning. In this case, the training data consists of both labelled and unlabelled instances with the obvious goal of generating a better classifier than would be possible with the labelled data only. The *phenoDisco* algorithm, will be illustrated in that context (section 3.4).

#### 3.1 Data visualisation

The underlying principle of gradient approaches is that we have separated organelles along the gradient and by doing so, generated organelle-specific protein distributions along the gradient fractions. The most natural visualisation is shown on figure 2,

obtained using the sub-setting functionality of `MsnSet` instances and the `plotDist` function, as illustrated below.

```
## indices of the mito markers
j <- which(fData(tan2009r1)$markers == "mitochondrion")
## indices of all proteins assigned to the mito
i <- which(fData(tan2009r1)$PLSDA == "mitochondrion")
plotDist(tan2009r1[i, ], markers = featureNames(tan2009r1)[j])
```



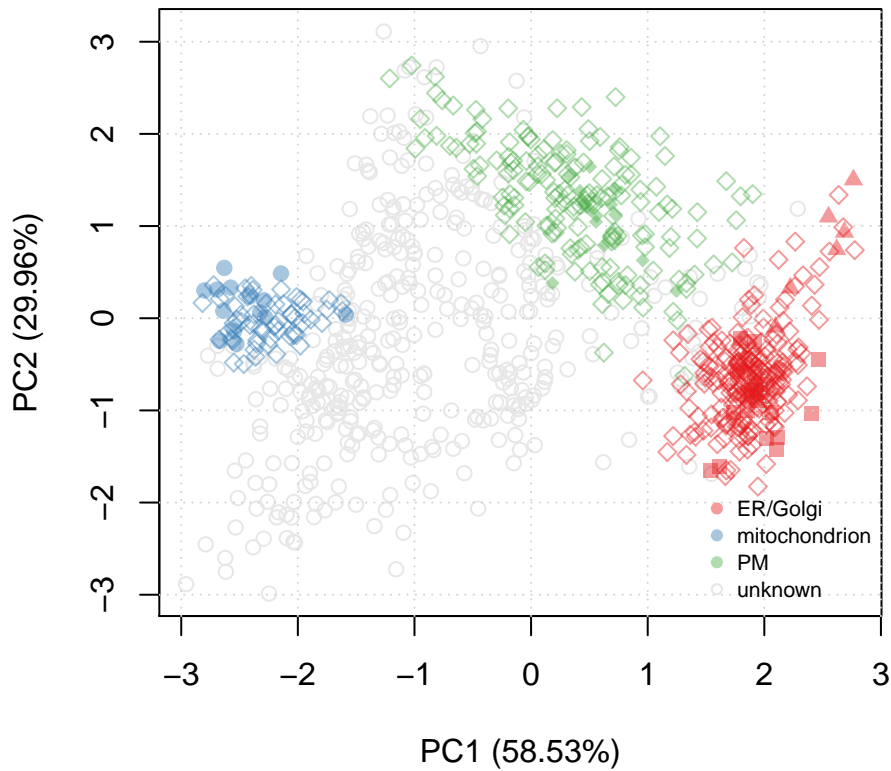
**Figure 2:** Distribution of protein intensities along the fractions of the separation gradient for 4 organelles: mitochondrion (red), ER/Golgi (blue, ER markers and green, Golgi markers) and plasma membrane (purple).

Alternatively, we can combine all organelle groups in one 2 dimensional figure by applying dimensionality reduction using the `plot2D` function (see figure 3).

### 3.2 Unsupervised ML

The `plot2D` can also be used to visualise the data on a PCA plot omitting any marker definitions, as shown on figure 4. This approach avoids any bias towards marker definitions and concentrate on the data and its underlying structure itself.

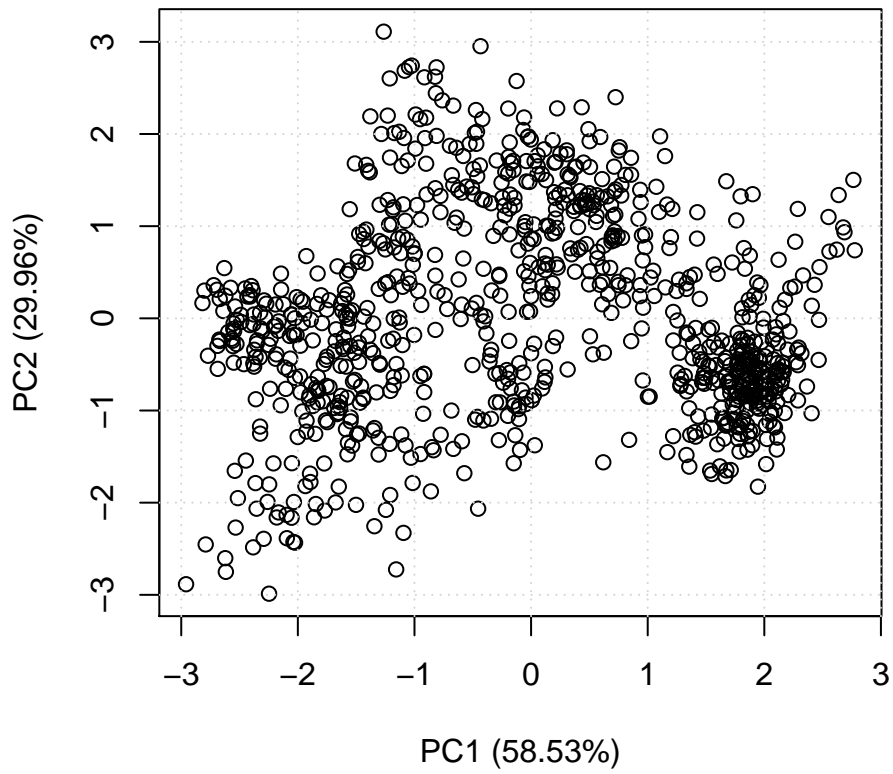
```
> plot2D(tan2009r1, fcol = "PLSDA", fpch = "markers")
> addLegend(tan2009r1, fcol = "PLSDA", where = "bottomright",
+           bty = "n", cex = 0.7)
```



**Figure 3:** Representation of the 888 protein of tan2009r1 after reduction the 4 reporter quantitation data to 2 principal components.

Alternatively, pRoloc also gives access to MLInterfaces's MLean unified interface for, among others, unsupervised approaches using k-means (figure 5 on page 17), hierarchical (figure 6 on page 18) or partitioning around medoids (figure 7 on page 19), clustering.

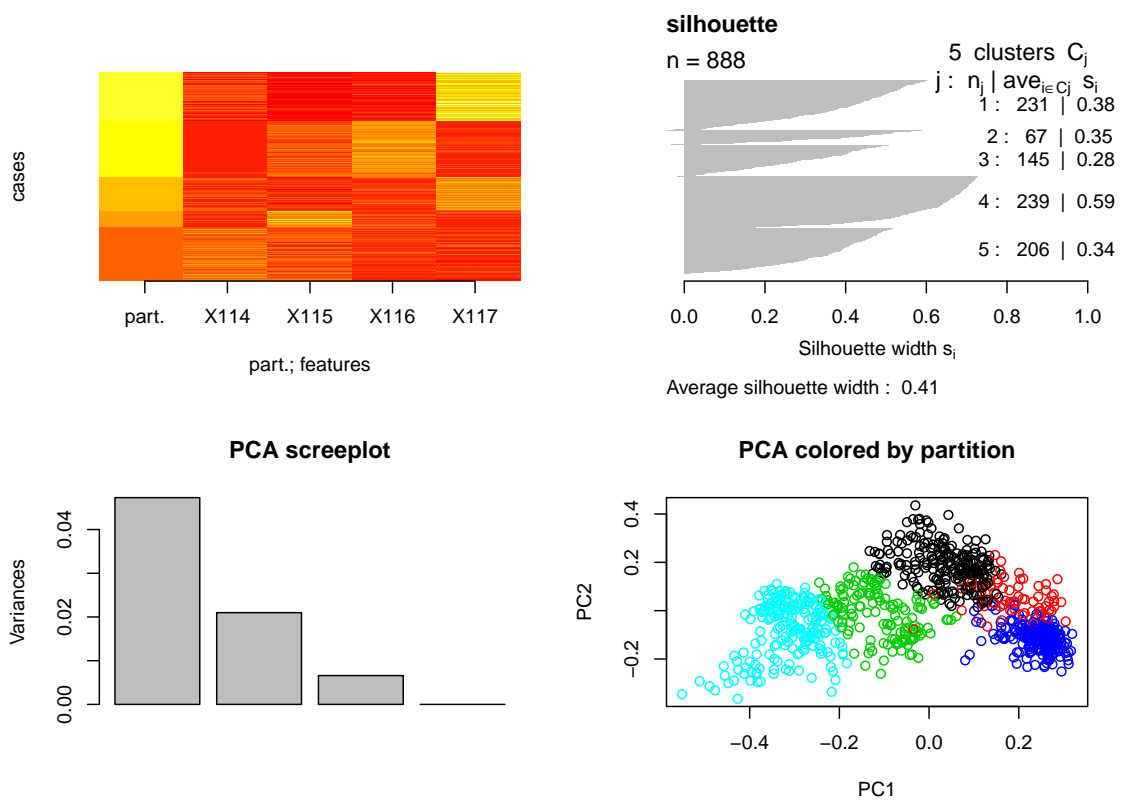
```
> plot2D(tan2009r1, fcol = NULL)
```



**Figure 4:** Plain PCA representation of the tan2009r1 data.



```
> kcl <- MLearn(~., tan2009r1, kmeansI, centers = 5)
> plot(kcl, exprs(tan2009r1))
```

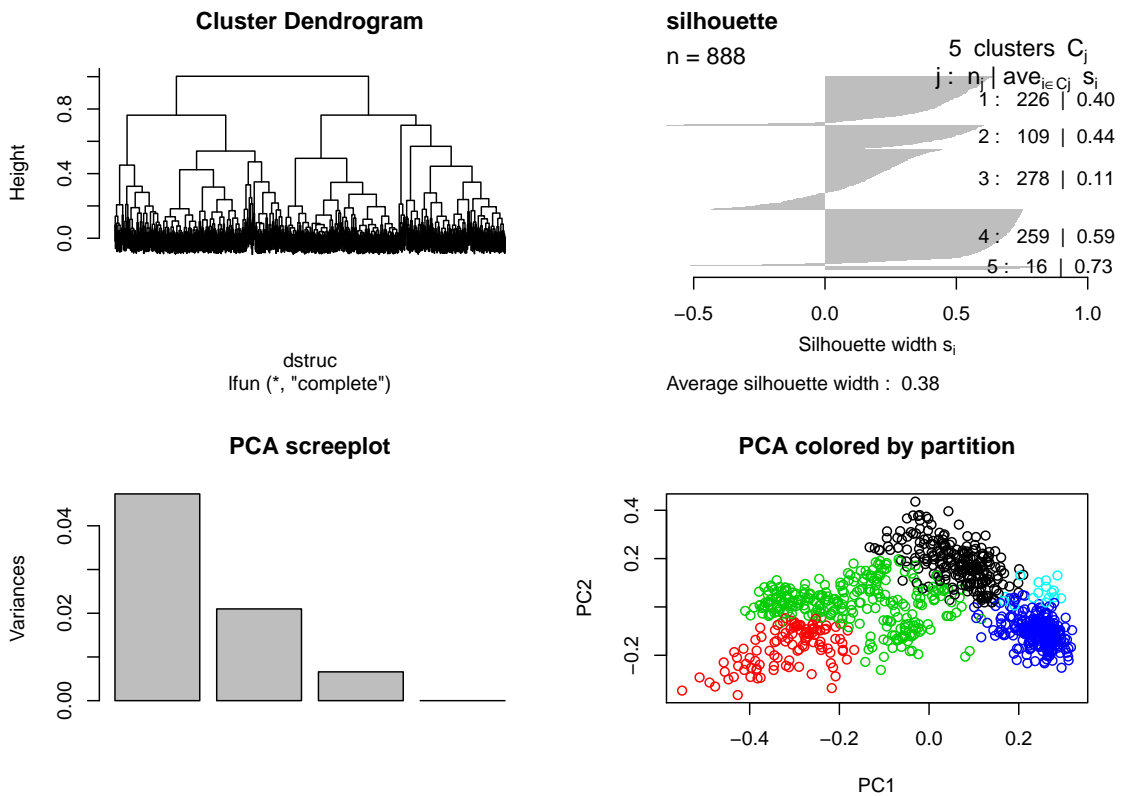


**Figure 5:** k-means clustering on the tan2009r1 data.

```

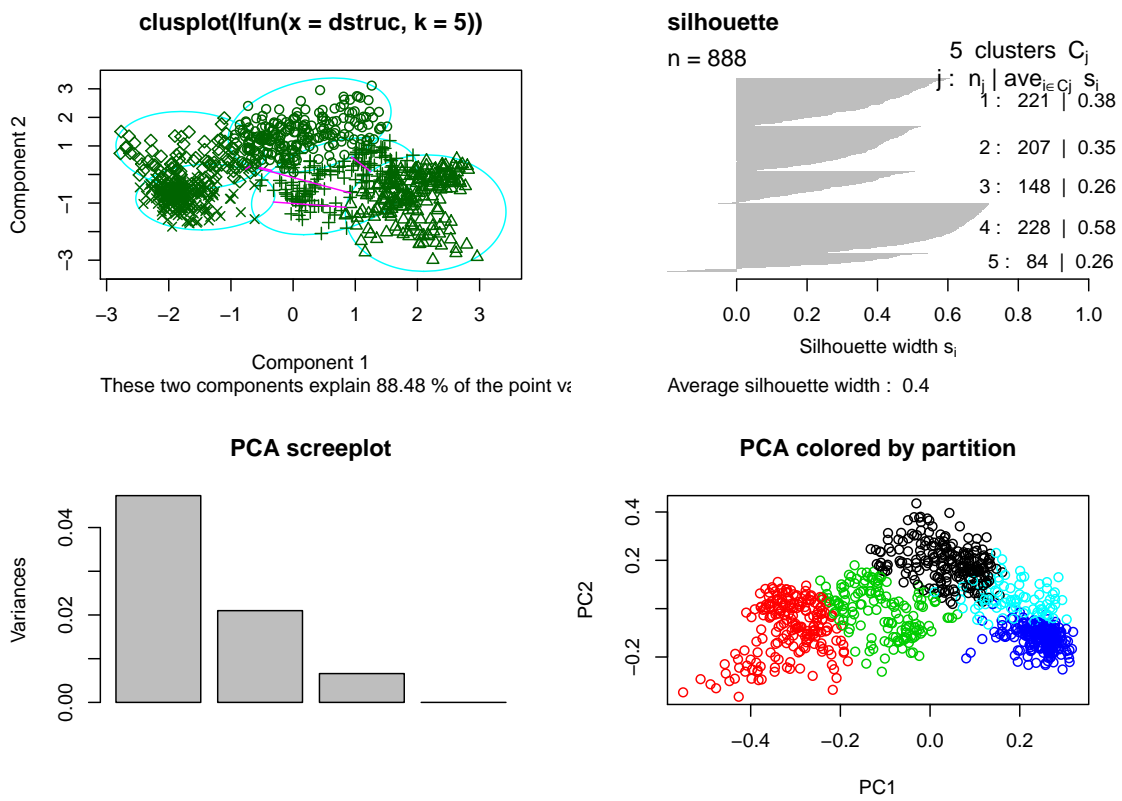
> hcl <- MLearn( ~ ., tan2009r1,
+               hclustI(distFun = dist, cutParm = list(k = 5)))
> plot(hcl, labels = FALSE)

```



**Figure 6:** Hierarchical clustering on the tan2009r1 data.

```
> pcl <- MLearn(~., tan2009r1, pamI(dist), k = 5)
> plot(pcl, data = exprs(tan2009r1))
```



**Figure 7:** Partitioning around medoids on the tan2009r1 data.

### 3.3 Supervised ML

In this section, we show how to use `pRoloc` to run a typical supervised ML analysis. Several ML methods are available, including k-nearest neighbour (`knn`), partial least square discriminant analysis (`plsda`), random forest (`rf`), support vector machines (`svm`), ... The detailed description of each method is outside of the scope of this document. We will use support vector machines to illustrate a typical pipeline and the important points that should be paid attention to. These points are equally valid and work, from a `pRoloc` user perspective, exactly the same for the other approaches.

#### 3.3.1 Classification algorithm parameters optimisation

Before actually generating a model on the new markers and classifying unknown residents, one has to take care of properly setting the model parameters. Wrongly set parameters can have a very negative impact on classification performance. To do so, we create testing (to model) and training (to predict) subsets using known residents. By comparing observed and expected classification prediction, we can assess how well a given model works using the macro F1 score (see below). This procedure is repeated for a range of possible model parameter values (this is called a grid search), and the best performing set of parameters is then used to construct a model on all markers and predict un-labelled proteins.

Models accuracy is evaluated using the F1 score,  $F1 = 2 \frac{precision \times recall}{precision + recall}$ , calculated as the harmonic mean of the precision ( $precision = \frac{tp}{tp+fp}$ , a measure of *exactness* – returned output is a relevant result) and recall ( $recall = \frac{tp}{tp+fn}$ , a measure of *completeness* – indicating how much was missed from the output). What we are aiming for are high generalisation accuracies, i.e high *F1*, indicating that the marker proteins in the test data set are consistently correctly assigned by the algorithms.

In the code chunk below, algorithmic performance is estimated using 5-fold stratified cross-validation (creating 5 test/train splits), which features an additional cross-validation on each training partition in order to optimise free parameters via a grid search. This process is repeated 10 times and best and averaged accuracies are shown in figure 8. This procedure is implemented in the `svmOptimisation`. See `?svmOptimisation` for details, in particular how the relevant feature variable is defined by the `fc1` parameters, which defaults to `"markers"`. Note that here, we only perform 10 iterations (`times = 10`) and would rather recommend 100 (which is the default value).

```
> params <- svmOptimisation(tan2009r1, times = 10, xval = 5,  
+   verbose = FALSE)  
> params
```

```

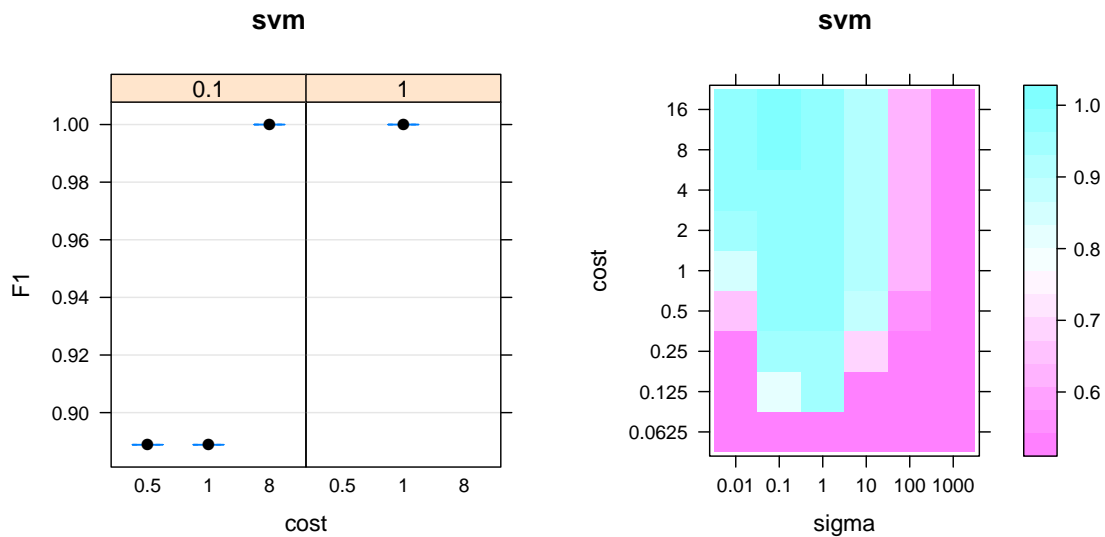
Object of class "GenRegRes"
Algorithm: svm
Hyper-parameters:
  cost: 0.0625 0.125 0.25 0.5 1 2 4 8 16
  sigma: 0.01 0.1 1 10 100 1000
Design:
  Replication: 10 x 5-fold X-validation
  Partitioning: 0.2/0.8 (test/train)
Results
macro F1:
  Min. 1st Qu.  Median    Mean 3rd Qu.  Max.
  0.889  0.889  0.944  0.944  1.000  1.000
best sigma: 1 0.1
best cost: 1 0.5 8

```

```

> plot(params)
> levelPlot(params)

```



**Figure 8:** Assessing parameter optimisation. On the left, we see the respective distributions of the 10 macro F1 scores for the best cost/sigma parameter pairs. See also the output of `f1Count` in relation to this plot. On the right, we see the averaged macro F1 scores, for the full range of parameter values.

In addition to the plots on figure 8, `f1Count(params)` returns, for each combination of parameters, the number of best (highest) F1 observations. One can use `getParams` to see the default set of parameters that are chosen based on the executed optimisation. Currently, the first best set is automatically extracted, and users are advised to critically assess whether this is the most wise choice.

```

> f1Count(params)

      0.5 1  8
0.1    0 0  1
1     NA 4 NA

> getParams(params)

sigma  cost
      1    1

```

### 3.3.2 Classification

We can now re-use the result from our parameter optimisation (a best cost/sigma pair is going to be automatically extracted, using the `getParams` method, although it is possible to set them manually), and use them to build a model with all the marker proteins and predict unknown residents using the `svmClassification` function (see the manual page for more details). By default, the organellar markers will be defined by the "markers" feature variables (and can be defined by the `fcol` parameter). New feature variables containing the organelle assignments and assignment probabilities<sup>5</sup>, called scores hereafter, are automatically added to the `featureData` slot; in this case, using the `svm` and `svm.scores` labels.

```

> ## manual setting of parameters
> svmres <- svmClassification(tan2009r1, sigma = 1, cost = 1)

> ## using default best parameters
> svmres <- svmClassification(tan2009r1, params)
> processData(svmres)

- - - Processing information - - -
Performed svm prediction (sigma=1 cost=1) Wed Aug 14 23:28:12 2013
MSnbase version: 1.7.24

> tail(fvarLabels(svmres), 4)

[1] "pd.2013"      "pd.markers"  "svm"         "svm.scores"

```

<sup>5</sup>The calculation of the classification probabilities is dependent on the classification algorithm. These probabilities are not to be compared across algorithms; they do **not** reflect any **biologically relevant** sub-cellular localisation probability but rather an algorithm-specific classification confidence score.

The original markers, classification results and scores can be accessed with the `fData` accessor method, e.g. `fData(svmres)$svm` or `fData(svmres)$svm.scores`. Two helper functions, `getMarkers` and `getPredictions` are available and add some level of automation and functionality, assuming that the default feature labels are used. Both (invisibly) return the corresponding feature variable (the markers or assigned classification) and print a summary table. The `fcoll` parameter must be specified for `getPredictions`. It is also possible to define a classification probability below which classifications are set to "unknown".

```
> p1 <- getPredictions(svmres, fcoll = "svm")
```

predictions			
	ER	Golgi	PM
	236	33	402
mitochondrion			
	217		

```
> minprob <- median(fData(svmres)$svm.scores)
> p2 <- getPredictions(svmres, fcoll = "svm", t = minprob)
```

predictions			
	ER	Golgi	PM
	203	18	130
mitochondrion			
	93	444	

```
> table(p1, p2)
```

p1	p2				
	ER	Golgi	PM	mitochondrion	unknown
ER	203	0	0	0	33
Golgi	0	18	0	0	15
PM	0	0	130	0	272
mitochondrion	0	0	0	93	124

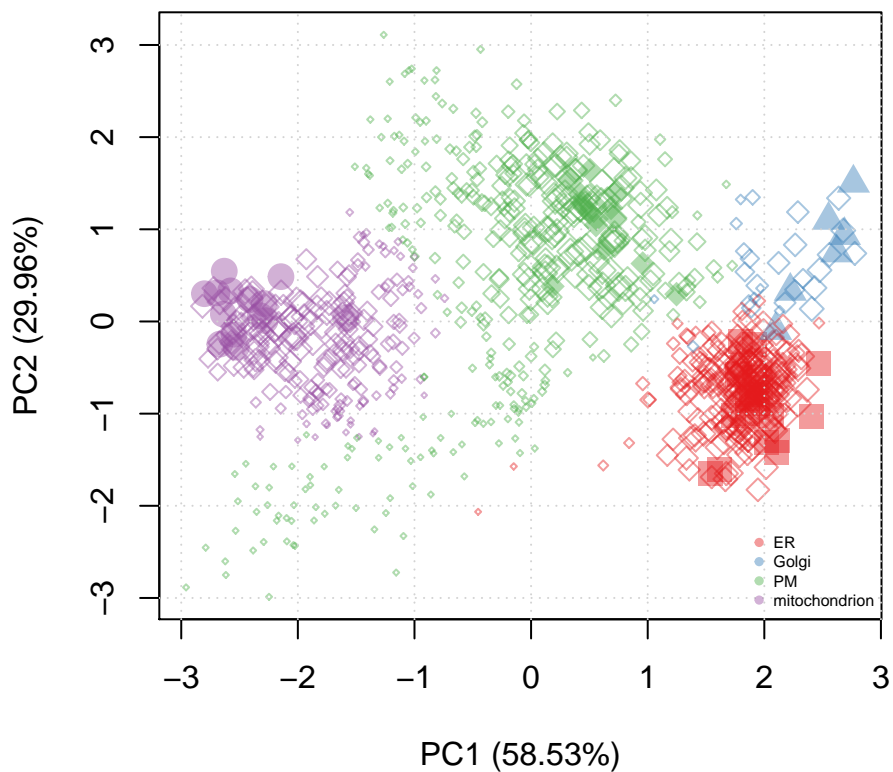
To graphically illustrate the organelle-specific score distributions, use

```
> boxplot(svm.scores ~ svm, data = fData(svmres))
> abline(h = minprob)
```

We can now visualise these results using the plotting functions presented in section 3.1, as shown on figure 9. We clearly see that besides the organelle marker clus-

ters that have been assigned high confidence members, many other proteins have substantially lower prediction scores.

```
> ptsze <- exp(fData(svmres)$svm.scores) - 1
> plot2D(svmres, fcol = "svm", fpch = "markers", cex = ptsze)
> addLegend(svmres, fcol = "svm", where = "bottomright", bty = "n",
+          cex = 0.5)
```



**Figure 9:** Representation of the svm prediction on the 888 data set. The full symbols represent the original cluster markers. The svm scores have been used to set the point size (the scores have been transformed to emphasise the extremes).



### 3.4 Semi-supervised ML

It is obvious that the set of markers initially used (ER, Golgi, mitochondrion, PM) is not a biologically realistic representation of the organellar diversity. Manually finding markers is however time consuming, as it requires careful verification of the annotation, and possibly critical for the subsequent analysis, as markers are directly used in the training phase of the supervised ML approach.

As can be seen in the PCA plots above, there is inherent structure in the data that can be made use of to automate the detection of new clusters. The *phenoDisco* algorithm (Breckels et al., In press) is an iterative method, that combines classification of proteins to known groups and detection of new clusters. It is available in pRoloc through the `phenoDisco` function<sup>6</sup>.

```
> pdres <- phenoDisco(tan2009r1, GS = 10, times = 100, fcol = "PLSDA")
```

The results are also appended to the `feautreData` slot.

```
> processingData(pdres)

- - - Processing information - - -
Combined [888,4] and [1,4] MSnSets Wed Feb 13 17:28:54 2013
Run phenoDisco using 'PLSDA': Wed Feb 13 17:28:54 2013
  with parameters times=100, GS=10, p=0.05, r=1.
MSnbase version: 1.5.13

> tail(fvarLabels(pdres), 3)

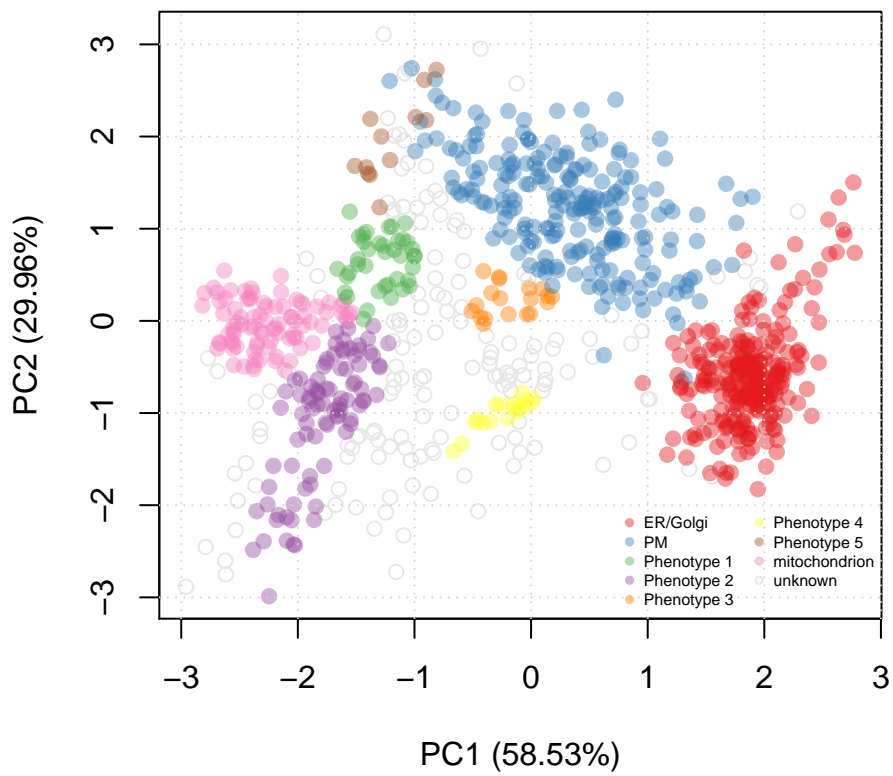
[1] "PLSDA"  "markers" "pd"
```

The `plot2D` function, can, as previously, be utilised to visualise the results, as shown on figure 10.

---

<sup>6</sup>In the interest of time, `phenoDisco` is not executed when the vignette is dynamically built. The data object can be located with `dir(system.file("extdata", package = "pRoloc"), full.names = TRUE, pattern = "pdres.rda")` and loaded with `load`.

```
> plot2D(pdres, fcol = "pd")
> addLegend(pdres, fcol = "pd", ncol = 2, where = "bottomright",
+   bty = "n", cex = 0.5)
```



**Figure 10:** Representation of the phenoDisco prediction and cluster discovery results.

### 3.5 Following up on novelty discovery

The newly discovered phenotypes need to be carefully validated prior to further analysis. Indeed, as the structure of the data is made use of in the discovery algorithm, some might represent peculiar structure in the data and not match with biologically relevant groups. The `tan2009r1` data has been submitted to a careful `phenodisco` analysis and validation in [Breckels et al. \(In press\)](#). The results of this new, augmented marker set is available in the `pd.markers` feature data. These markers represent a combined set of the original markers and validated proteins from the new phenotypes.

```
> getMarkers(tan2009r1, fcol = "pd.markers")
```

```
organelleMarkers
```

Cytoskeleton	ER	Golgi
7	20	6
Lysosome	Nucleus	PM
8	20	15
Peroxisome	Proteasome	Ribosome 40S
4	11	14
Ribosome 60S mitochondrion		unknown
25	14	744

The augmented set of markers is now employed to repeat the classification using the support vector machine classifier. We apply a slightly different analysis than described in section 3.3.2 (page 22). In the code chunk below, we use class specific weights when creating the svm model; the weights are set to be inversely proportional to class frequencies.

```
> w <- table(fData(tan2009r1)[, "pd.markers"])
```

```
> (w <- 1/w[names(w) != "unknown"])
```

Cytoskeleton	ER	Golgi
0.14286	0.05000	0.16667
Lysosome	Nucleus	PM
0.12500	0.05000	0.06667
Peroxisome	Proteasome	Ribosome 40S
0.25000	0.09091	0.07143
Ribosome 60S mitochondrion		
0.04000	0.07143	

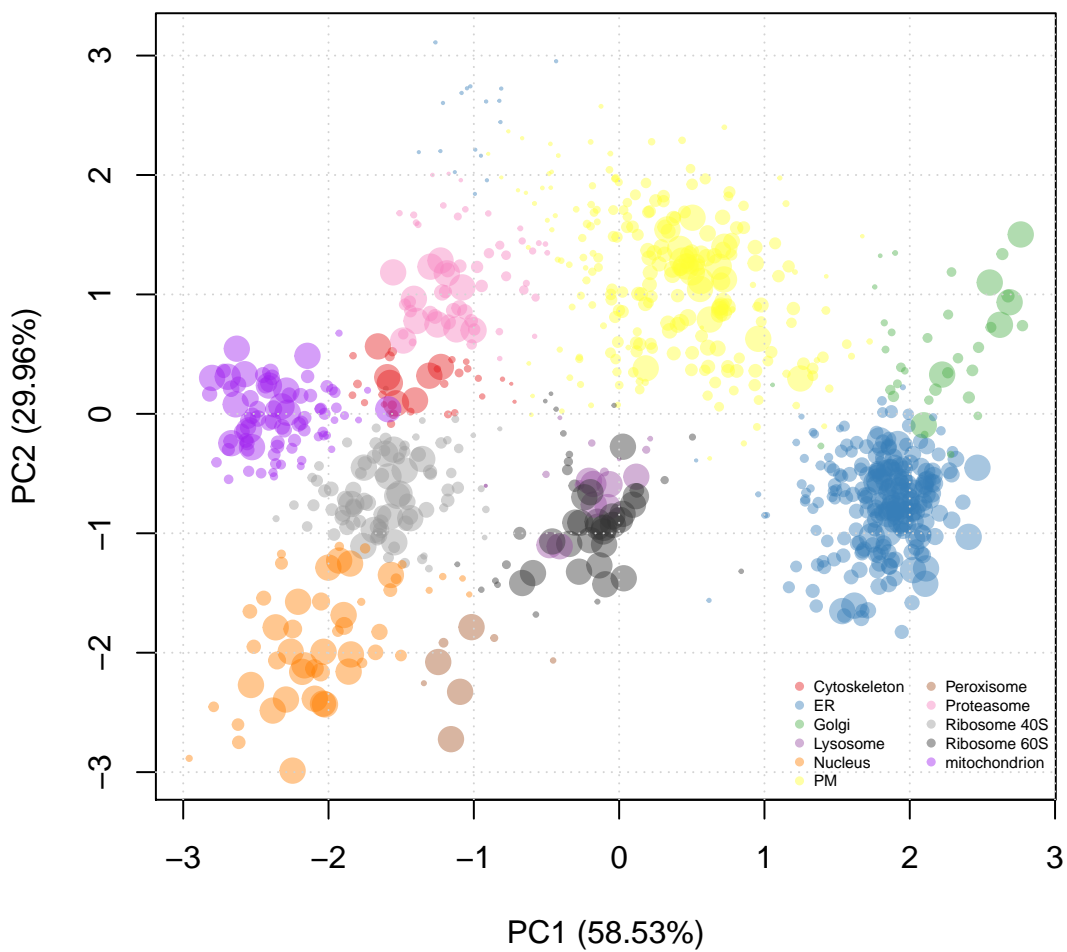
```
> params <- svmOptimisation(tan2009r1, fcol = "pd.markers",
+                           times = 10, xval = 5,
+                           class.weights = w,
+                           verbose = FALSE)
> tan2009r1 <- svmClassification(tan2009r1, params,
+                               class.weights = w,
+                               fcol = "pd.markers")
```

The data is visualised as described previously, were we use the svm classification a-posteriori probability to set the point size.

```

> ptsze <- exp(fData(tan2009r1)$svm.scores) - 1
> plot2D(tan2009r1, fcol = "svm", cex = ptsze)
> addLegend(tan2009r1, fcol = "svm", where = "bottomright",
+   ncol = 2, bty = "n", cex = 0.5)

```



**Figure 11:** Second round of classification using the augmented set of markers obtained using phenoDisco as detailed in [Breckels et al. \(In press\)](#) and a weighted svm classifier.

## 4 Conclusions

This tutorial focuses on practical aspects of organelles proteomics data analysis using pRoloc. Two important aspects have been illustrated: (1) data generation, manipulation and visualisation and (2) application of contemporary and novel machine learning techniques. Other crucial parts of a full analysis pipeline that were not covered here are raw mass-spectrometry quality control, quantitation, post-analysis and data validation.

Data analysis is not a trivial task, and in general, one can not assume that any off-the-shelf algorithm will perform well. As such, one of the emphasis of the software presented in this document is allowing users to track data processing and critically evaluate the results.

## Session information

All software and respective versions used to produce this document are listed below.

- R version 3.0.1 (2013-05-16), x86\_64-unknown-linux-gnu
- Locale: LC\_CTYPE=en\_US.UTF-8, LC\_NUMERIC=C, LC\_TIME=en\_US.UTF-8, LC\_COLLATE=C, LC\_MONETARY=en\_US.UTF-8, LC\_MESSAGES=en\_US.UTF-8, LC\_PAPER=C, LC\_NAME=C, LC\_ADDRESS=C, LC\_TELEPHONE=C, LC\_MEASUREMENT=en\_US.UTF-8, LC\_IDENTIFICATION=C
- Base packages: base, datasets, grDevices, graphics, methods, parallel, stats, utils
- Other packages: AnnotationDbi 1.22.6, Biobase 2.20.1, BiocGenerics 0.6.0, MASS 7.3-28, MLInterfaces 1.40.0, MSnbase 1.8.0, Rcpp 0.10.4, annotate 1.38.0, class 7.3-8, cluster 1.14.4, codetools 0.2-8, e1071 1.6-1, genefilter 1.42.0, ggplot2 0.9.3.1, knitr 1.4.1, mzR 1.6.2, pRoloc 1.0.1, pRolocdata 1.0.0, rda 1.0.2-2, rpart 4.1-1, sfsmisc 1.0-24
- Loaded via a namespace (and not attached): BiocInstaller 1.10.3, DBI 0.2-7, IRanges 1.18.3, KernSmooth 2.23-10, MSBVAR 0.7-2, Matrix 1.0-12, RColorBrewer 1.0-5, RSQLite 0.11.4, XML 3.98-1.1, affy 1.38.1, affyio 1.28.0, caret 5.17-7, coda 0.16-1, colorspace 1.2-2, dichromat 2.0-0, digest 0.6.3, evaluate 0.4.7, formatR 0.9, gdata 2.13.2, grid 3.0.1, gtable 0.1.2, gtools 3.0.0, highr 0.2.1, impute 1.34.0, kernlab 0.9-18, labeling 0.2, lattice 0.20-15, limma 3.16.7, lpSolve 5.6.7, mboost 2.2-2, mclust 4.2, munsell 0.4.2, nnet 7.3-7, plyr 1.8, preprocessCore 1.22.0, proto 0.3-10, proxy 0.4-10, randomForest 4.6-7, reshape2 1.2.2, sampling 2.5, scales 0.2.3, splines 3.0.1, stats4 3.0.1, stringr 0.6.2, survival 2.37-4, tools 3.0.1, vsn 3.28.0, xtable 1.7-1, zlibbioc 1.6.0

## References

- Lisa M Breckels, Laurent Gatto, Andrew Christoforou, Around J Groen, Kathryn S Lilley, and Matthew WB Trotter. The effect of organelle discovery upon sub-cellular protein localisation. *Journal of Proteomics*, In press.
- Tom P. J. Dunkley, Svenja Hester, Ian P. Shadforth, John Runions, Thilo Weimar, Sally L. Hanton, Julian L. Griffin, Conrad Bessant, Federica Brandizzi, Chris Hawes, Rod B. Watson, Paul Dupree, and Kathryn S. Lilley. Mapping the arabidopsis organelle proteome. *Proc Natl Acad Sci USA*, 103(17):6518–6523, Apr 2006. doi: 10.1073/pnas.0506958103. URL <http://dx.doi.org/10.1073/pnas.0506958103>.
- Leonard J. Foster, Carmen L. de Hoog, Yanling Zhang, Yong Zhang, Xiaohui Xie, Vamsi K. Mootha, and Matthias Mann. A mammalian organelle map by protein correlation profiling. *Cell*, 125(1):187–199, Apr 2006. doi: 10.1016/j.cell.2006.03.022. URL <http://dx.doi.org/10.1016/j.cell.2006.03.022>.

- Laurent Gatto and Kathryn S Lilley. MSnbase – an R/Bioconductor package for isobaric tagged mass spectrometry data visualization, processing and quantitation. *Bioinformatics*, 28(2):288–9, Jan 2012. doi: 10.1093/bioinformatics/btr645.
- Laurent Gatto, Juan Antonio Vizcaíno, Henning Hermjakob, Wolfgang Huber, and Kathryn S Lilley. Organelle proteomics experimental designs and analysis. *Proteomics*, 2010. doi: 10.1002/pmic.201000244.
- Robert C. Gentleman, Vincent J. Carey, Douglas M. Bates, Ben Bolstad, Marcel Dettling, Sandrine Dudoit, Byron Ellis, Laurent Gautier, Yongchao Ge, Jeff Gentry, Kurt Hornik, Torsten Hothorn, Wolfgang Huber, Stefano Iacus, Rafael Irizarry, Friedrich Leisch, Cheng Li, Martin Maechler, Anthony J. Rossini, Gunther Sawitzki, Colin Smith, Gordon Smyth, Luke Tierney, Jean Y. H. Yang, and Jianhua Zhang. Bioconductor: open software development for computational biology and bioinformatics. *Genome Biol*, 5(10):–80, 2004. doi: 10.1186/gb-2004-5-10-r80. URL <http://dx.doi.org/10.1186/gb-2004-5-10-r80>.
- R Development Core Team. *R: A Language and Environment for Statistical Computing*. R Foundation for Statistical Computing, Vienna, Austria, 2011. URL <http://www.R-project.org/>. ISBN 3-900051-07-0.
- Philip L. Ross, Yulin N. Huang, Jason N. Marchese, Brian Williamson, Kenneth Parker, Stephen Hattan, Nikita Khainovski, Sasi Pillai, Subhakar Dey, Scott Daniels, Subhasish Purkayastha, Peter Juhasz, Stephen Martin, Michael Bartlett-Jones, Feng He, Allan Jacobson, and Darryl J. Pappin. Multiplexed protein quantitation in *saccharomyces cerevisiae* using amine-reactive isobaric tagging reagents. *Mol Cell Proteomics*, 3(12):1154–1169, Dec 2004. doi: 10.1074/mcp.M400129-MCP200. URL <http://dx.doi.org/10.1074/mcp.M400129-MCP200>.
- Denise J Tan, Heidi Dvinge, Andy Christoforou, Paul Bertone, Alfonso A Martinez, and Kathryn S Lilley. Mapping organelle proteins and protein complexes in *drosophila melanogaster*. *J Proteome Res*, 8(6):2667–78, Jun 2009. doi: 10.1021/pr800866n.